

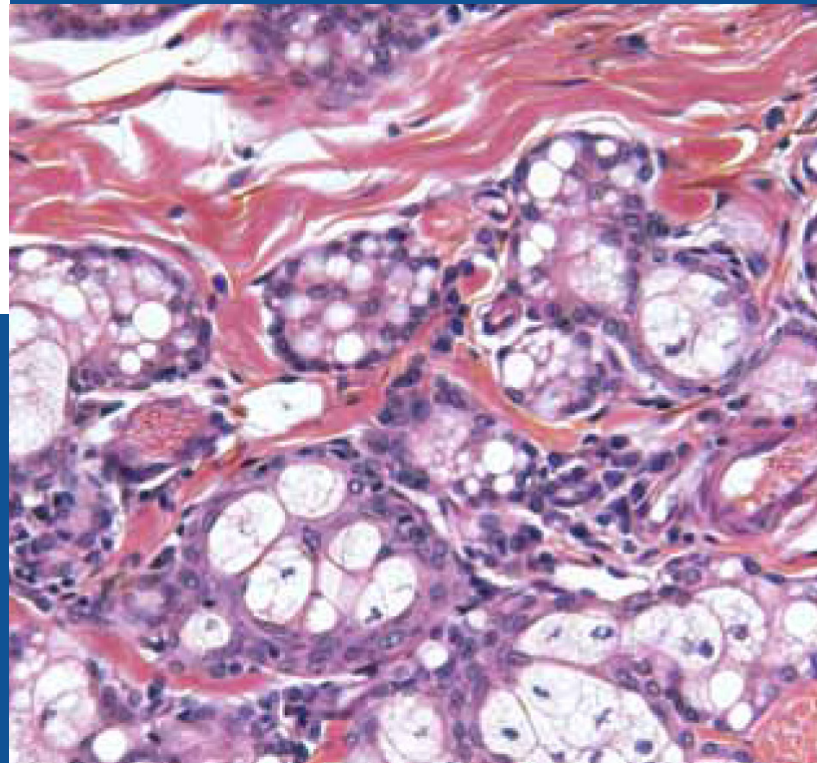
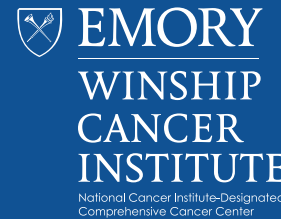
Winship Cancer Institute
of Emory University

presents

Winship Melanoma & Cutaneous Oncology Symposium

SATURDAY, MARCH 7, 2020

Emory University
Health Sciences Research Building
1760 Haygood Drive NE
Atlanta, GA 30322



General Information

COURSE DESCRIPTION

The management of melanoma has undergone a rapid and massive shift in the past decade. Improvements in diagnosis, classification, and treatment have contributed to improving outcomes in patients. However, the rapid improvement also places great strain on clinicians who must remain updated with the latest data supporting new diagnostic and therapeutic methods.

This meeting will serve as a valuable forum for the presentation and discussion of newly available data. Participants will be provided with an update on practice-changing data in a practical and interactive format, fostering discussion and impacting clinical outcomes for patients with melanoma and non-melanoma skin cancer.

TARGET AUDIENCE

This activity is specifically designed to meet the needs of dermatologists, medical, surgical, and radiation oncologists, hematologists, residents, fellows, advanced practice providers, nurses and pharmacists.

LEARNING OBJECTIVES

After successful completion of this educational activity, participants should be able to:

- Identify best practices for diagnosis and risk assessment during the diagnostic workup of melanoma, including the appropriate use of sentinel-node biopsy;
- Recognize key features of non – melanoma skin cancer, along with the emerging treatment options and recent clinical trial data in this setting;
- Outline treatment strategies for Merkel cell carcinoma;
- Select patients for whom radiotherapy should be used alone or in combination with other therapeutic modalities;
- Identify key data supporting systemic treatment options like immunotherapies and MAPK pathway inhibitors;
- Recognize and manage cutaneous and non-cutaneous complications of immunotherapy and targeted therapy;
- Understand the adjuvant and neoadjuvant approaches to skin cancer.

CONTINUING EDUCATION CREDIT

The Emory University School of Medicine designates this live activity for a maximum of 5.5 AMA PRA Category 1 Credits™. Physicians should only claim credit commensurate with the extent of their participation in the activity.

Successful completion of this CME activity, which includes participation in the evaluation component, enables the participant to earn up to 5.5 MOC points in the American Board of Internal Medicine's (ABIM) Maintenance of Certification (MOC) program. It is the CME activity provider's responsibility to submit participant completion information to ACCE for the purpose of granting ABIM MOC credit.

The Emory University School of Medicine is accredited by the ACCME to provide continuing medical education for physicians.

This education activity will be submitted to the Emory Nursing Professional Development Center (ENPDC). Determination of credit is pending.

This education activity will be submitted to the Georgia Society of Health-System Pharmacists. Determination of credit is pending.

SYMPOSIUM LOCATION AND LODGING

The conference will be held in the Emory University Health Sciences Research Building, 1760 Haygood Drive NE, Atlanta, GA 30322.

We have not reserved a hotel room block. For your convenience, a few nearby hotels are:

Emory Conference Center Hotel (0.8 miles)
1615 Clifton Road, Atlanta, GA 30329
phone: (800) 933-6679
www.emoryconferencecenter.com

The University Inn at Emory (0.5 miles)
1767 N Decatur Road, Atlanta, GA 30307
phone: (800) 654-8591
<https://www.univinn.com>

Courtyard by Marriott Atlanta Decatur Downtown/Emory (2.0 miles)
130 Clairemont Avenue, Decatur, GA 30030
phone: (404) 371-0204
<https://www.marriott.com/hotels/travel/atldc-courtyard-atlanta-decatur-downtown-emory/>

REGISTRATION

The registration fee includes course material, continental breakfast, breaks, lunch and other amenities involved in a rewarding learning experience. Minimum and maximum enrollments have been established. A refund of your registration fee will be made if written cancellation is received no later than April 17, 2020. The liability of Emory University is limited to the registration fee. Emory will not be responsible for any losses incurred by registrants, including but not limited to, airfare cancellation or hotel deposits.

Live Symposium Registration Fees:

- \$100 - Physicians
- \$75 - Physician Assistants/Nurse Practitioners/Nurses/Pharmacists
- \$25 - Residents/Fellows/Medical Students

Residents/Fellows/Medical Students will receive registration fee refund when symposium attendance is verified. Please pay with credit card to assure an expeditious refund.

Virtual Symposium Registration Fees:

- \$50 - Physicians
- \$40 - Physician Assistants/Nurse Practitioners/Nurses/Pharmacists
- \$20 - Residents/Fellow/Medical Students

ADDITIONAL INFORMATION

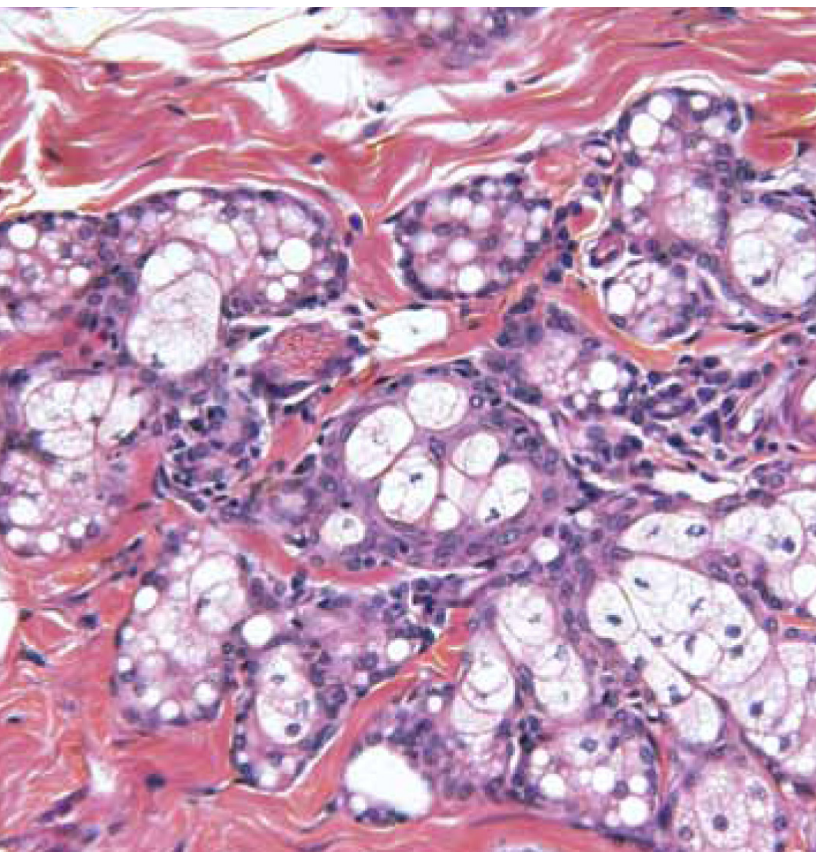
Please contact Milini Mingo, 404-727-3612; milini.mingo@emory.edu or the Emory CME Office, 404-727-5695 with any questions.

EMORY UNIVERSITY CONTINUING MEDICAL EDUCATION
100 Woodruff Circle NE, Suite 331
Atlanta, GA 30322



www.emory.edu/CME

- 7:00 – 8:00a **BREAKFAST AND REGISTRATION**
- 8:00 – 8:15 **WELCOME AND HOUSEKEEPING**
- 8:15 – 9:00 **CUTANEOUS SQUAMOUS CELL CARCINOMA STAGING AND HOW THAT HELPS US MANAGE HIGH RISK PATIENTS**
Chrysalyne D Schmults, MD
- 9:00 – 9:45 **DERMATOLOGIC TOXICITY OF TARGETED AND IMMUNE THERAPY FOR MELANOMA**
Mario Lacouture, MD
- 9:45 – 10:00 **BREAK**
- 10:00 – 10:45 **APPROACH TO MELANOMA LYMPH NODES AND MOLECULAR PROGNOSTIC TESTING**
Kelly M. McMasters, MD, PhD
- 10:45 – 11:30 **APPROACH TO MELANOMA CNS METASTASES**
Kim Margolin, MD
- 11:30 – 12:00p **Q&A FOR MORNING SESSIONS**
- 12:00 **LUNCH**



FOCUS GROUPS 12:30-2:00

GROUP A

- Further discussion of management of non-melanoma skin cancers
- Management of ambiguous lesions
- Mohs micrographic surgery
- Indications for sentinel node biopsy
- Role of dermatologists in follow - up of patients on treatment

GROUP B

- Management of resectable locoregional skin cancers including adjuvant and neoadjuvant treatment
- Management of resectable metastatic disease, including discussions about definitions of resectability, adjuvant and neoadjuvant treatment, role of radiation therapy with or without immunotherapy

GROUP C

- Sequencing of treatment for metastatic cutaneous malignancies, with emphasis on melanoma
- Treatment of refractory disease, including definitions of primary refractory, development of refractory disease while on treatment and relapse after a period off treatment
- Management of noncutaneous toxicities of treatment

2:00 – 3:00 **WRAP-UP**

3:00 **ADJOURN**



COURSE DIRECTOR

David H. Lawson, MD
Professor, Department of Hematology and Medical Oncology
Winship Cancer Institute of Emory University School of Medicine

EMORY UNIVERSITY WINSHIP CANCER INSTITUTE FACULTY

Suephy C. Chen, MD, MS
Professor, Department of Dermatology
Vice Chair, Department of Dermatology
Director of Dermatology Center for Outcomes Research and Safety (DCORS) Unit, Emory University
Director of Emory Cutaneous Melanoma and Pigmented Lesion Center, Department of Dermatology
Director of TeleDermatology Service, Emory University
Director of TeleDermatology Service and Dermatology Mini-Residency, Atlanta VA Medical Center
Staff Physician and Assistant Chief of Service, Division of Dermatology, Atlanta VA Medical Center

Travis W. Blalock, MD
Associate Professor
Department of Dermatology
Director, Dermatologic Surgery, Mohs Micrographic Surgery and Cutaneous Oncology
Department of Dermatology
Director, Micrographic Surgery and Dermatologic Oncology Fellowship
Department of Dermatology
Staff Physician, Division of Dermatology, Atlanta VA Medical Center

Keith Delman, MD
Professor of Surgery, Division of Surgical Oncology, Department of Surgery, Emory University School of Medicine
Associate Chairman, Clinical and Faculty Affairs, Department of Surgery, Emory University School of Medicine
Carlos Professor of Surgical Anatomy and Technique, Department of Surgery, Emory University School of Medicine
Director, Carlos and Davis Center for Surgical Anatomy and Technique, Department of Surgery, Emory University School of Medicine
Program Director, General Surgery Residency Program, Department of Surgery, Emory University School of Medicine

Mohammad K. Khan MD, PhD, DABR
Associate Professor, Department of Hematology and Medical Oncology, Emory University School of Medicine

Ragini Kudchadkar, MD
Associate Professor, Department of Hematology and Medical Oncology, Emory University School of Medicine

Michael Lowe, MD
Assistant Professor, Division of Surgical Oncology, Department of Surgery, Emory University School of Medicine

Douglas C. Parker, MD
Associate Professor, Department of Pathology & Laboratory Medicine, Emory University School of Medicine

Benjamin K. Stoff, MD, MA
Associate Professor, Department of Dermatology
Associate Professor, Department of Pathology and Laboratory Medicine
Senior Faculty Fellow, Emory Center of the Ethics
Staff Physician, Teledermatology, Atlanta VA Medical Center

Howa Yeung, MD
Assistant Professor, Department of Dermatology

Melinda L. Yushak, MD, MPH
Assistant Professor, Department of Hematology and Medical Oncology, Emory University School of Medicine

INVITED FACULTY

Mario Lacouture, MD
Dermatologist, Memorial Sloan Kettering Cancer Center
Director, Oncodermatology Program

Kelly M. McMasters, MD, PhD
Ben A. Reid, Sr., M.D. Professor and Chairman, Department of Surgery, University of Louisville
Director, Multidisciplinary Melanoma Clinic
Associate Director, J. Graham Brown Cancer Center

Kim Margolin, MD
Clinical Professor, Department of Medical Oncology & Therapeutics Research
Medical Oncologist
City of Hope

Chrysalyne D. Schmults, MD
Physician, Brigham and Women's Hospital
Vice Chair, Surgical Oncology, Department of Dermatology
Director, Mohs and Dermatologic Surgery Center
Program Director, Micrographic Surgery and Dermatologic Oncology Fellowship Program
Associate Professor, Harvard Medical School - Dermatology

Registration

Winship Melanoma & Cutaneous Oncology Symposium

SATURDAY, MARCH 7, 2020

Emory University Health Sciences Research Building
1760 Haygood Drive NE
Atlanta, GA 30322

Register Online @ www.emory.edu/CME

Live Symposium Registration Fees:

- \$100 - Physicians
- \$75 - Physician Assistants/Nurse Practitioners/Nurses/Pharmacists
- \$25 - Residents/Fellows/Medical Students

Virtual Symposium Registration Fees:

- \$50 - Physicians
- \$40 - Physician Assistants/Nurse Practitioners/Nurses/Pharmacists
- \$20 - Residents/Fellow/Medical Students

Total Payments \$ _____

Make check(s) payable to:
Emory University School of Medicine

Detach and mail to the address below:

Continuing Medical Education
Emory University School of Medicine
100 Woodruff Circle NE, Suite 331, Atlanta, GA 30322

Main: (404) 727-3612 **Toll Free:** (888) 727-5695
Fax: (404) 727-5667 **Email:** milini.mingo@emory.edu

If faxing/mailling registration, please complete the section below:

Name: _____

Specialty/Title: _____

Mailing Address: _____

City/State/Zip: _____

Phone: _____ Fax: _____

Email: _____

Special Accommodations: _____