



**ScienceQuest**

CONNECTING MINDS, SHAPING TOMORROW

**WCPHE-2026**

**World Conference on  
Public Health and  
Epidemiology**

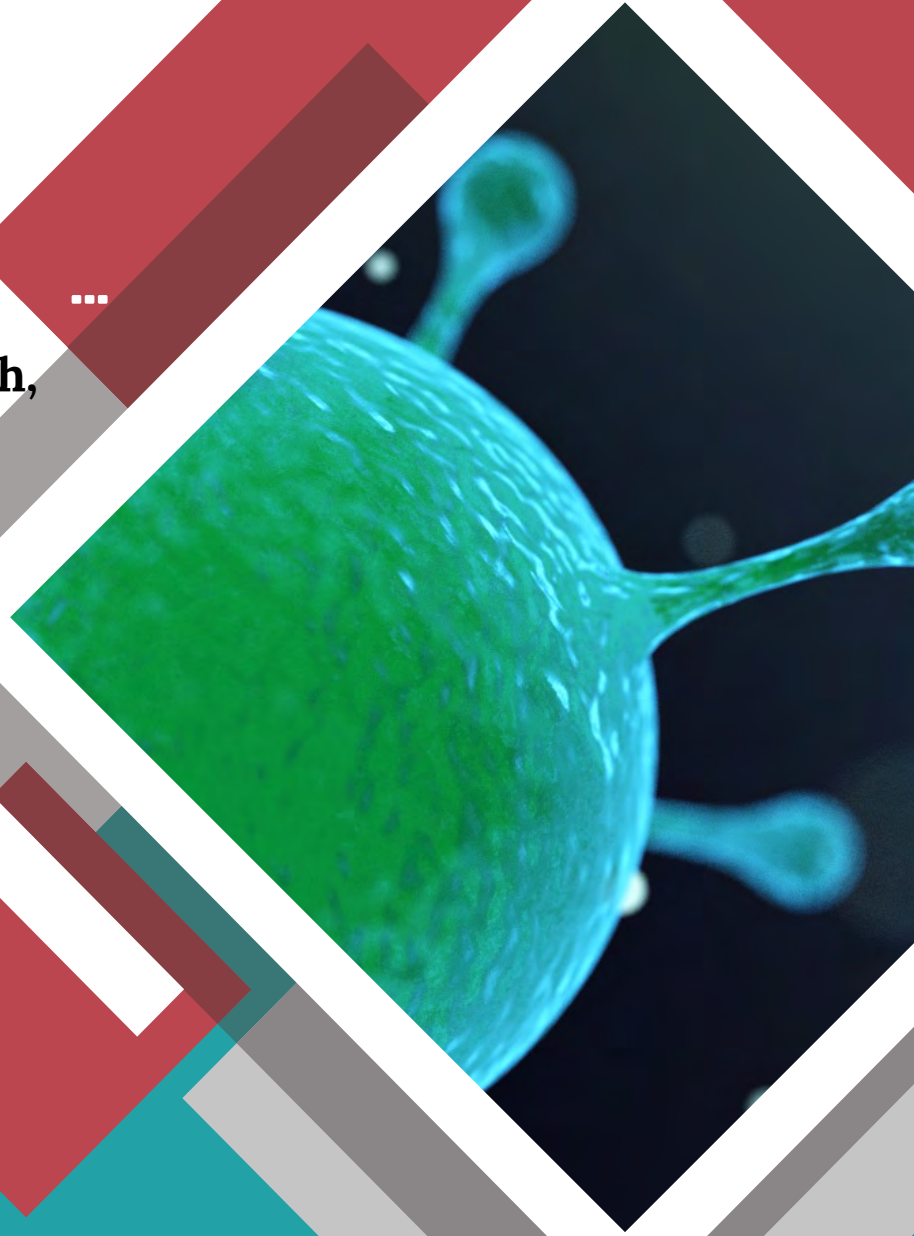


**September 24–26,  
2026**



**Hilton Garden Inn  
Munich Messe Munich,  
Germany**

**BROCHURE**



**+916304117143**



**WCPHE-2026@thesciencequest.info**



**<https://www.epidemiology.thesciencequest.org/>**

# Welcome Message:

---

Welcome to the **World Conference on Public Health and Epidemiology**, taking place from **September 24-26, 2026, in Munich, Germany**. This premier global event will bring together leading scientists, researchers, engineers, and industry professionals to explore the latest advancements in public health and epidemiology. Attendees will discover innovative research, emerging technologies, and transformative applications across energy, healthcare, electronics, and sustainability. The summit will feature inspiring keynote sessions, thought-provoking plenary talks, hands-on workshops, and engaging panel discussions.

It offers a unique platform for networking, collaboration, and knowledge exchange among global experts. Participants will gain insights into cutting-edge developments driving the future of science and industry. Join us in Munich to contribute to meaningful discussions, share insights, and collaborate on strategies that will help shape a healthier and more resilient global future through advances in public health and epidemiology.

## Scientific Committee

---



**Wen-Chen Tsai**  
*China Medical University,  
Taiwan*



**Raffaella Conversano**  
*University of Bari,  
Italy*



**Tetsuji Yamada**  
*Rutgers University,  
United States*



**Yehuda Shoenfeld**  
*Tel Aviv University,  
Israel*



**Luisa Maria Arvide Cambra**  
*University of Almería,  
Spain*



**Ubaldo Comite**  
*University of Calabria,  
Italy*



# Conference Topics:

- Global Disease Surveillance & Early Warning Systems.
- Emerging & Re-emerging Infectious Diseases.
- Noncommunicable Diseases: Epidemiology & Control.
- Digital Health & Epidemiological Data Science.
- Climate Change, Environment & Health.
- One Health & Zoonotic Epidemiology.
- Genetic & Molecular Epidemiology.
- Social Determinants of Health & Health Equity.
- Health Systems & Policy Epidemiology.
- Health Economics, Financing & Cost-Effectiveness.
- Behavioral Epidemiology & Health Promotion.
- Occupational & Industrial Epidemiology.
- Maternal, Infant & Child Health Epidemiology.
- Adolescent & School Health Epidemiology.
- Nutrition Epidemiology & Food Systems.
- Environmental Epidemiology: Pollution, Water, Toxins.
- Universal Health Coverage: progress, barriers, and innovation
- Injury, Violence & Injury Epidemiology.
- Disaster Preparedness, Response & Recovery.
- Vaccine & Immunization Epidemiology.
- Antimicrobial Resistance (AMR) & Stewardship.
- Methodological Advances in Epidemiology.
- Biostatistics & Statistical Methods in Public Health.
- Implementation Science & Translational Epidemiology.
- Ethics, Privacy & Governance in Public Health Research.
- Mobile Health & Wearables in Epidemiology.
- Community Engagement & Participatory Epidemiology.
- Health in Humanitarian Settings & Fragile Contexts.
- Law, Regulation & Public Health Policy.
- Global Health Challenges & Future Directions.
- Others

## Abstract submission link:

<https://www.epidemiology.thesciencequest.org/abstractsubmission>



## Registration Prices:

- Speaker Registration: **\$749**
- Package A (Registration + 2 Nights' Accommodation): **\$1119**
- Package B (Registration + 3 Nights' Accommodation): **\$1329**
- Online participation: **\$399**
- Student/Poster Registration: **\$549**
- Delegate: **\$849**

**REGISTER NOW!**

**Note:**  
**Group Discounts are Available for  
More Than Three Members.**



# Program schedule:

Day 1	Day 2	Day 3
08:00-09:30 Registrations & Introduction	09:00-11:30 Plenary Session & Scientific Sessions	09:00-11:30 Scientific Sessions
09:30-11:30 Plenary Session	11:30-11:45 Networking Break	11:30-11:45 Networking Break
11:30-11:45 Networking Break	11:45-13:45 Keynote Session & Scientific Sessions	11:45-13:45 Scientific Sessions
11:45-13:15 Keynote Session & Scientific Sessions	13:45-14:30 Networking Lunch Break	13:45-14:30 Networking Lunch Break
13:15-14:00 Group Photo & Network Lunch	14:30-16:30 Scientific Sessions	14:30-16:30 Scientific Sessions
14:00-16:00 Keynote Session & Scientific Sessions	16:30-16:45 Networking Break	16:30-16:45 Networking Break
16:00-16:15 Networking Break	16:45-18:30 Scientific Sessions	16:45-18:30 Scientific Sessions
16:15-18:00 Scientific Sessions	18:30-19:00 Certification	18:30-19:00 Closing Ceremony
18:00 Onwards Certification & Cocktail Party	19:00 Onwards Certification & Cocktail Party	19:00 Onwards Certification & Cocktail Party



# Sponsorship/ Exhibiter Opportunities:

## Platinum Sponsor

- Opportunity to sponsor 10 Poster Presentation Awards.
- Three corporate-sponsored workshops (including audio-visual setup).
- Two complimentary exhibit booths (priority for booth location selection, size: 3×3 sqm).
- Four complimentary registrations for the conference.
- Premium logo recognition:
- Congress website front page (<https://www.epidemiology.thesciencequest.org/>).
- Congress sponsorship page.
- Corresponding journal home page.
- Advertisement & Branding:
- One A4 color advertisement in the congress program or abstract book (excluding cover pages).
- Three promotional inserts in the delegate bags.
- One post-conference email campaign to attendees (content provided by sponsor, approved, and sent via our journal).
- Exclusive online promotion across all our social media platforms.
- Special Discounts:
- 20% waiver on sponsorship for any of our next year's conferences.

## Gold Sponsor

- Opportunity to sponsor 5 Poster Presentation Awards.
- Two corporate-sponsored workshops (including catering and audio-visual setup).
- One complimentary exhibit booth (priority for booth location selection, size: 3×3 sqm).
- Three complimentary registrations for the conference.
- Logo recognition:
- Congress website front page (<https://www.epidemiology.thesciencequest.org/>).
- Congress sponsorship page.
- Advertisement & Branding:
- One A4 color advertisement in the congress program or abstract book (excluding cover pages).
- Two promotional inserts in the delegate bags.
- Exclusive online promotion across all social media platforms.
- Special Discounts:
- 15% waiver on sponsorship for any of our next year's conferences.



## Silver Sponsor

- Opportunity to sponsor 3 Poster Presentation Awards.
- One corporate-sponsored workshop (including catering and audio-visual setup).
- One complimentary exhibit booth (priority for booth location selection, size: 3×3 sqm).
- Two complimentary registrations for the conference.
- Logo recognition:
- Congress sponsorship page.
- Advertisement & Branding:
- One A4 color advertisement in the congress program or abstract book (excluding cover pages).
- One promotional insert in the delegate bags.
- Exclusive online promotion across all social media platforms.
- Priority access to purchase additional sponsorship items.
- Special Discounts:
- 10% waiver on sponsorship for any of our next year's conferences.

## Exhibitor Benefits

- Opportunity to sponsor 1 Poster Presentation Award.
- One complimentary registration for the conference.
- One custom exhibit booth (size: 3×3 sqm).
- Logo recognition on the congress sponsorship page.
- Advertisement & Branding:
- One A4 color advertisement in the congress program or abstract book.
- Inclusion of company leaflet in delegate bags.
- Exclusive online promotion across social media.
- Special Discounts:
- 5% waiver on sponsorship for any of our next year's conferences.
- Global Visibility & Networking:
- Recognition for your products and services worldwide through our website.
- Develop and strengthen B2B relationships.
- Corporate image enhancement through logo branding.
- Brand promotion at opening and closing ceremonies.
- Press release on behalf of your company.
- Brand announcement via 50,000 brochures worldwide.
- Conference posters (10,000 copies) shared with industries and universities globally.



# About Munich, Germany :

Experience Munich: The Perfect Destination for the **World Conference on Public Health and Epidemiology – WCPHE 2026** We are thrilled to host the World Conference on Public Health and Epidemiology – WCPHE 2026, in the dynamic city of Munich, Germany, from September 24-26, 2026. Renowned for its innovative research ecosystem, technological excellence, and rich cultural heritage, Munich offers an exceptional setting for a global gathering of scientists, researchers, and industry leaders in the fields of nanotechnology and advanced materials.

## Why Munich?

Munich, the vibrant capital of Bavaria, seamlessly combines scientific innovation with cultural sophistication, making it the ideal destination for WCPHE 2026. As one of Europe's leading centres for technology and research, Munich is home to world-renowned institutions such as the Technical University of Munich (TUM), the Max Planck Institutes, and Fraunhofer research centres—driving groundbreaking advancements in nanotechnology, materials science, and applied engineering. The city's strong collaboration between academia and industry fosters an environment where scientific ideas are transformed into real-world applications.

Beyond its scientific prominence, Munich enchants visitors with its blend of tradition and modernity. From the historic charm of Marien Platz and the beauty of Nymphenburg Palace to the contemporary architecture of the BMW Welt and cutting-edge museums, Munich offers a rich cultural experience.

## Tourist Attractions:



**Conference Manager,**

**Mr. David,**

**Phone: +916304117143**

**Email: WCPHE-2026@thesciencequest.info**

**Website: <https://www.epidemiology.thesciencequest.org/6-3-864/G/1>, Green Lands, Hyderabad, India 500016**